



PRAIRIE SOLAR

Proposed Solar Project in Isle of Wight



PRESERVING ISLE OF WIGHT SCENIC VISTAS

Prairie Solar will be **completely hidden** from any neighbors or travelers on Longview Drive. There will be a **50-foot vegetative buffer along the entire project**, ensuring that this site will be completely hidden behind a dense tree line. This will add to the natural beauty of Isle of Wight County and preserving its agricultural character.



AMERICAN ENERGY INDEPENDENCE

The locally produced energy from the project will further **reduce our country's reliance on foreign energy resources** while delivering reliable, clean energy to Isle of Wight County.



BUY AMERICAN COMMITMENT

Prairie Solar will utilize **American-made solar panels** from First Solar, a company with a 20+ year track record of product safety and reliability. Supporting the American manufacturing industry is an important part of our business model, which is why we **buy American** whenever possible.



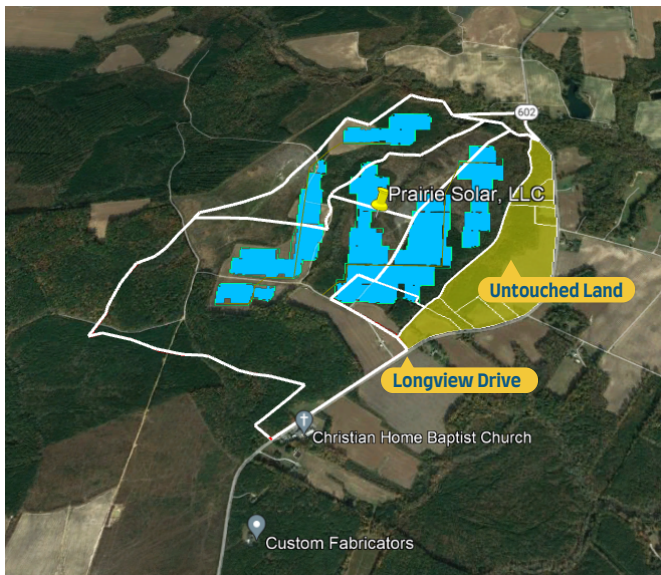
LOCAL INVESTMENT

Prairie Solar will result in **\$4.5 million in additional revenues** to Isle of Wight County to fund critical services, all while avoiding additional strain on existing county infrastructure. It will also create approximately **30 well-paying construction jobs** over the course of the construction operation and will provide a boost to the local hospitality sector.



GOOD NEIGHBOR

Prairie Solar, the project owner, develops, constructs, owns and operates the solar project throughout its lifetime. Solar projects like ours are quiet and good neighbors that generate **no pollution, noise, odor, or traffic** after construction. We are committed to being a **good neighbor for the long run**.



PROJECT SPECIFICS

Prairie Solar is a **20 MW solar project** that will be located on **152 acres of private property** in Windsor.


A large unleased tract of land will serve as a **buffer from Longview Drive** to the project and ensure the **panels will be hidden** behind dense, existing vegetation.

There will be additional setbacks for:

- complete viewshed protection
- pollinator plantings
- protected wetlands
- preserved natural resources

If you would like to know more about the project or share your feedback, please contact us.

 info@prairiesolarproject.com

 (703)851-0059

For updates on development, visit: www.prairiesolarproject.com